

SINGLE TURN POTENTIOMETER
Model P25 Dual Gang
Ø 25 mm
1 00 000 Cycles
Wire Wound



RESENZO
SMARTER SENSING AND CONTROL

Features:

- Robust Construction
- Economically priced
- Good Linearity

Applications:

- Welding and Soldering Machines
- Electric Actuators
- Measuring Instruments



Electrical Data:

| | |
|-----------------------------|------------------------------------------------|
| Resistance Range | : 1K+1K Ω to 15K Ω +15k Ω |
| Resistance Tolerance | : \pm 10% |
| Linearity | : \pm 1 % |
| Power Rating | : 1 W at 70°C |
| Resolution | : Dependent on number of turns |
| Max. Wiper Current | : 10 mA in case of Failure (10 Sec) |
| Supply Voltage | : $U = \sqrt{P \times R}$ |
| Insulation Resistance | : 1G Ω at 500Vdc |
| Equivalent Noise Resistance | : Max. 100 Ω |
| Dielectric Strength | : 500Vac @50Hz |
| Temperature Coefficient | : Dependent of Resistance Range |
| End Resistance | : 0.1% or 5 Ω (Whichever is higher) |

Mechanical Data:

| | |
|------------------|------------------------|
| Life | : 1'00'000 Rotations |
| Repeatability | : 1% |
| Protection Class | : IP40 |
| Operating Torque | : Typ. 1 Ncm |
| Mech. Angle | : 285 \pm 5 $^\circ$ |

Environmental Data:

| | |
|-----------------------|-------------------|
| Storage Temperature | : -40°C to +105°C |
| Operating Temperature | : -40°C to +105°C |
| Vibration | : 15G |
| Shock | : 50G |

Material:

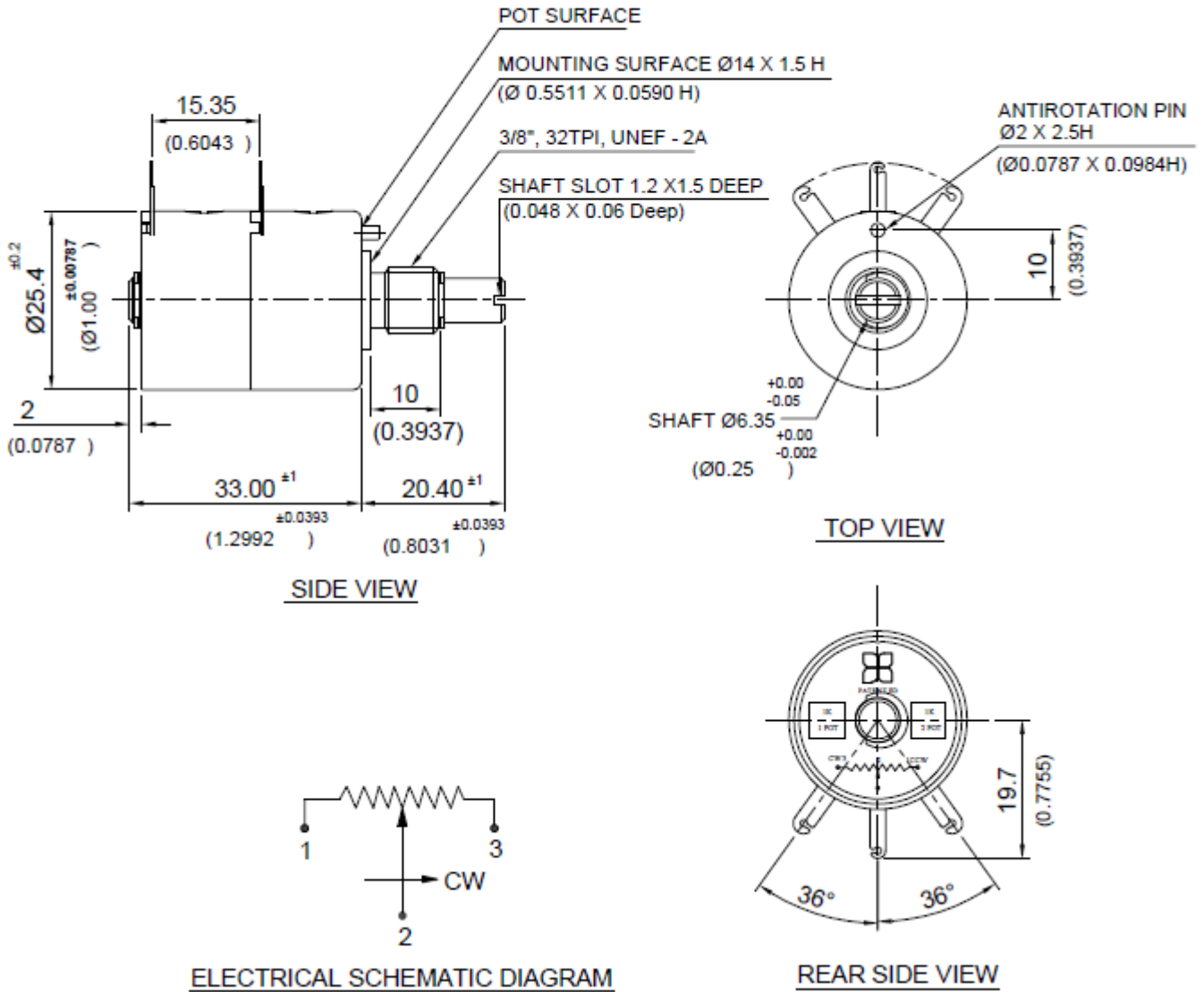
| | |
|-----------|-------------------|
| Housing | : Engg. Plastic |
| Shaft | : Stainless Steel |
| Terminals | : Silver plated |

SINGLE TURN POTENTIOMETER
Model P25 Dual Gang
 Ø 25 mm
 1 00 000 Cycles
 Wire Wound



Dimensional Drawing:

DIMENSIONS :- METRIC (INCH)



Options:
 Upon Request

Specifications subject to change without notice