

SINGLETURN POTENTIOMETER

Model POL 230

∅ 22 mm

5 000 000 Cycles

Conductive plastic



RESENZO
SMARTER SENSING AND CONTROL

Features:

- Servo mount
- High rotational life (ball bearing available)
- Excellent Linearity
- Non-standard features available

Applications:

- Joy-Sticks
- Valve regulation
- Door and gate automation
- Servosystems

Options:

- Linearity: 0.5%, 0.25%
- Shaft length: 5mm – 11mm
- Ball bearings: Shaft ∅ 3.17 mm
- Connections: Cable, connector, flat cable, wires
- Functions: Center tab Switch



Electrical Characteristics		Mechanical Characteristics	
Resistance range	1 - 10 kΩ	Rotational life	20'000'000 Cycles
Resistance tolerance	+/- 20%	mech. Angle	45° - 348° / Continuous
el. angle	45° - 348°	Protection rating	IP 65
Inp. Linearity	+/- 1%	Torque	typ. 0.7 cNm
Power rating	0.5 W / T _A 40°C		
rec. Wiper current	< 0.1 μA		
max. Wiper current	10 mA (malfunction)		
max. Wiper resistance	500 ohm		
Insulation resistance	10 GΩ / 500 VDC		
Dielectric strength	1000 VAC / 1 min.		
Temperature coefficient	600ppm / °C		
TC of voltage divider	30ppm / °C		

Environmental Conditions		Material	
Storage temperature	-40°C ÷ +105°C	Housing	Aluminium anodized
Operating temperature	-25°C ÷ +85°C	Shaft	Stainless steel
Climatic rating	25/085/56	Connections	Brass tin plated
Shock	50G		
Vibration	10G		

SINGLETURN POTENTIOMETER

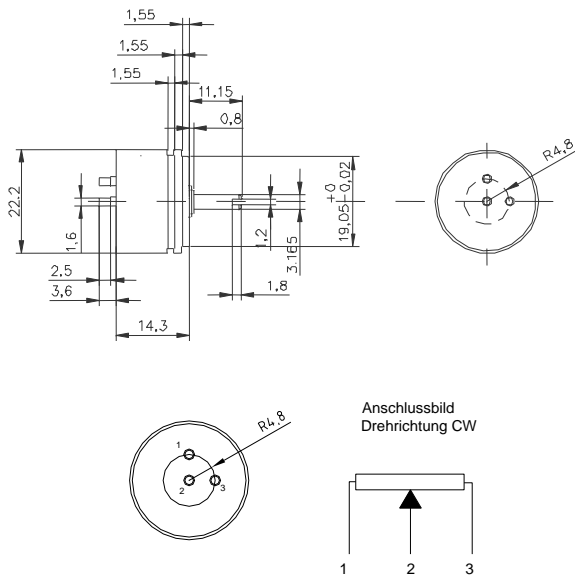
Model POL 230
 ø 22 mm
 5 000 000 Cycles
 Conductive plastic



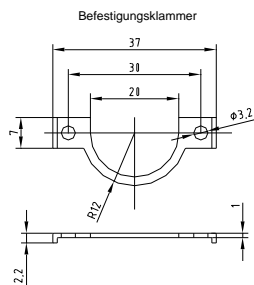
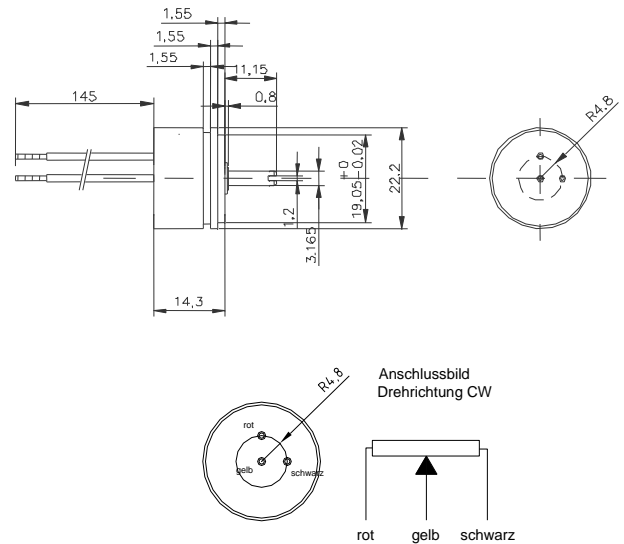
RESENZO
 SMARTER SENSING AND CONTROL

Standard model:

POL 230 U - PL



POL 230 U - LI



POL 230= Potentiometer Standard

Shaft length in 1/10mm
11 mm standard

GL=Slider
 KL= Ball bearings

P O L 2 3 0 U - P L - 1 0 0 k - 1 6 0 - 3 2 0 - D D B - G L

L= Conductive plastic

U= Shaft ø 1/8" length 11mm

Resistance
1, 5, 10 kohm
 other on demand

PL= Print axial
 KL= head pin
 LI= Wires 145 mm
 KA= Cable
 FB= Flat cable
 KS= Cable with connector

El. angle
320° und 340° other
 on demand

DDB= Continuous rotation standard

Specifications are subject to change without notice