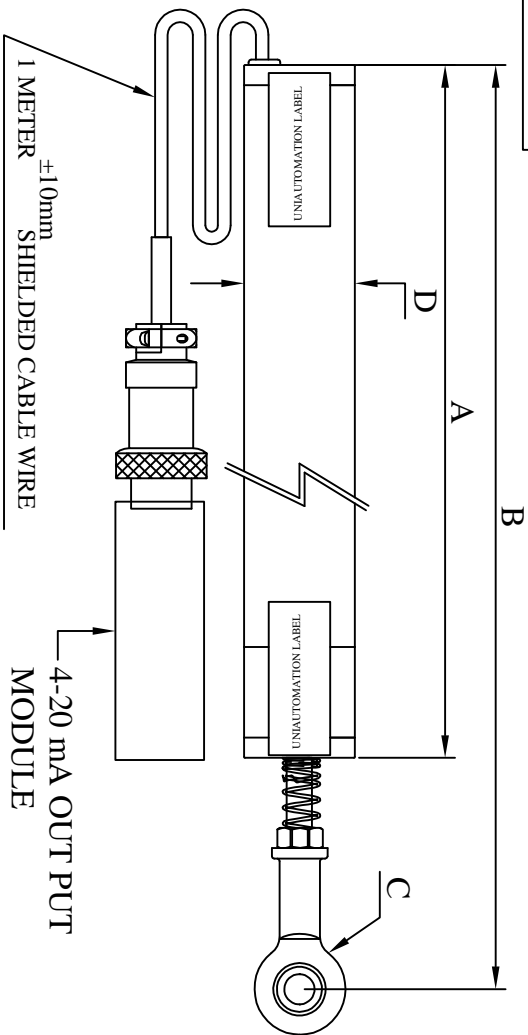


DIMENSIONS :- METRIC



| | | |
|---|---------------------------|------|
| WT 22 SERIES STROKE LENGTH | 100 SPRING RETURN | Tol. |
| ELECTRICAL STROKE LENGTH | 100 | ±5.0 |
| MECHANICAL STROKE LENGTH | 105 | ±5.0 |
| BODY LENGTH - A | 166 | ±1.0 |
| REB CENTER TO CENTER - B | IN CLOSED CONDITION 250 | ±5.0 |
| C - ROD END BEARING, ID-5.0 | SINGLE SIDE REB | ---- |
| BODY DIAMETER - D | Ø22 | ±0.2 |
| MOUNTING CLAMP 2 NOS & M4 X 30 LENGTH 4 NOS SCREW | ADJUSTABLE MOUNTING CLAMP | |



FIRST ISSUE : 16/03/16

SCALE : 1:1

TOLERANCES
DIN-ISO 2768-1 (1991-06)
(TOLERANCE CLASS:MEDIUM)

PART NO
U 149739



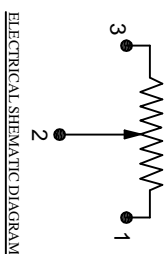
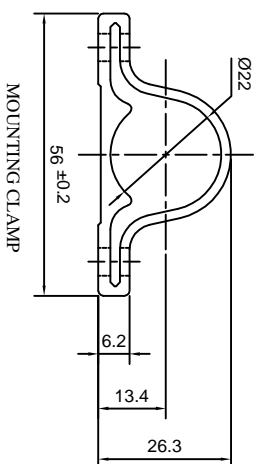
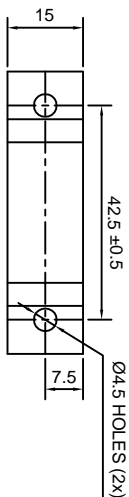
CUSTOMER DRAWING REF NO
NA
CUSTOMER : STANDARD

SHEET

1 of 1

**CONDUCTIVE PLASTIC
LINEAR MOTION POTENTIOMETER**

MODEL WT22 (739)



| ELECTRICAL CHARACTERISTICS | UNITS | VALUE |
|---|-----------|----------------------|
| RESISTANCE ELEMENT ... | -- | CONDUCTIVE PLASTIC |
| TOTAL RESISTANCE ... | Ohms | 5K (TYPICAL) |
| RESISTANCE TOLERANCE... | ±% | 20 |
| STANDARD INDEPENDENT LINEARITY TOLERANCE... | ±% | 0.5 |
| RESOLUTION... | -- | ESSENTIALLY INFINITE |
| TEMPERATURE COEFFICIENT OF RESISTANCE(TCR)... | ppm/deg C | ±400 |
| INSULATION RESISTANCE @ 50V D.C... | M Ohms | 500 |
| DIELECTRIC STRENGTH @ 50HZ... | V dc | 500 |
| ELECTRICAL LIFE (STROKE)... | STROKES | 5,000,000 |
| END VOLTAGE AS A % OF APPLIED VOLTAGE... | % | LESS THAN 0.5 |

| MECHANICAL CHARACTERISTICS :- | | |
|-------------------------------|------------------|----------------|
| BEARING TYPE... | -- | SLEEVE |
| TORQUE STARTING... | Nmm (Oz Inch) | 10 (1.416) |
| TORQUE RUNNING... | Nmm (Oz Inch) | 5 (0.708) |

| ENVIRONMENTAL CHARACTERISTICS :- | | |
|----------------------------------|-----------|-------------|
| OPERATING TEMPERATURE... | DEGREES C | -40 to +105 |
| ROHS COMPLIANCE... | -- | YES |

| MATERIALS OF CONSTRUCTION:- | | |
|-----------------------------------|----|-------------------------|
| HOUSING... | -- | ALUMINUM BLACK ANODIZED |
| SHAFT... | -- | STAINLESS STEEL |
| MOUNTING CLAMP... | -- | ALUMINUM WHITE ANODIZED |
| CHEESE HEAD SCREW FOR CLAMPING... | -- | MS (QTY. 40) |

NOTE :-
CONTINUOUS IMPROVEMENTS ARE BEING MADE FOR ENHANCING PERFORMANCE FOR CUSTOMER BENEFIT IN PRODUCT DESIGN & PROCESS. THE PRODUCT SUPPLIED MAY BE SLIGHTLY DIFFERENT THAN DESCRIBED BY ABOVE SPECIFICATIONS