

Single turn Potentiometer

Model POL 225

∅ 22 mm

5 000 000 Cycles

Conductive Plastic



RESENZO
SMARTER SENSING AND CONTROL

Characteristics:

- High Lifespan
- Robust Design
- Good Lineriaty

Applications:

- Joy-Sticks
- Valve Controls
- Steering Angle Measurment
- Servo Systems



Electrical Data:

Resistance Range	: 1kΩ, 5kΩ ,10kΩ
Resistance tolerance	: ± 20%
el.Angle	: upto 348°
Linearity	: ± 1%
Power Rating	: 0.5W at 40°C
Resolution	: almost ∞
Max. Wiper current	: 10mA im Störfall
Supply Voltage	: Refer Diagram
Constant Resistance	: max. 10kΩ
Isolation resistance	: 10GΩ bei 500Vdc
Dielectric Strength	: 1000Vac
Temperature coefficient	: ± 600 ppm/°C
Temperature coefficient of the voltage divider:	: ± 20 ppm/°C

Mechanical Data:

Rotational Life	: 5 000 000 Cycles
Mech. Angle	: 45° - 348° : and continuous
Protection Rating	: IP 63
Torque	: 0.7 cNm
Mounting	: Bearing

Environmental Conditions:

Storage Temperature:	-25°C ÷ +85°C
Operating Temperature:	-25°C ÷ +85°C
Climate rating	: 25/085/56
Shock	: 50G

Material:

Housing	: Plastic
Shaft	: Stainless Steel/ Plastic
Terminals	: Tin plated

Single turn Potentiometer

Model POL 225

∅ 22 mm

5 000 000 Cycles

Conductive Plastic

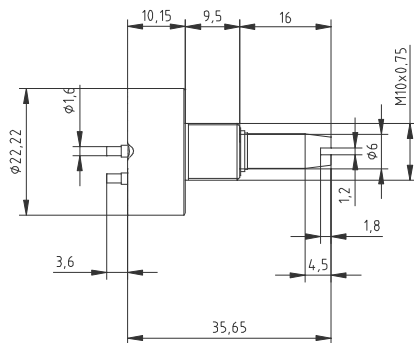


RESENZO
SMARTER SENSING AND CONTROL

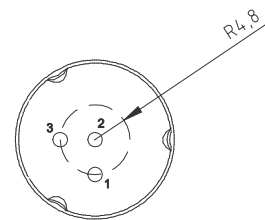
Standard Models:

Typ	POL 225 PL	POL 225 KOL
	Plain stud type terminal	I-let stud type Terminal
Circuit Diagram	1	1
Drawing	A	B
Angle of rotation	320°	320°

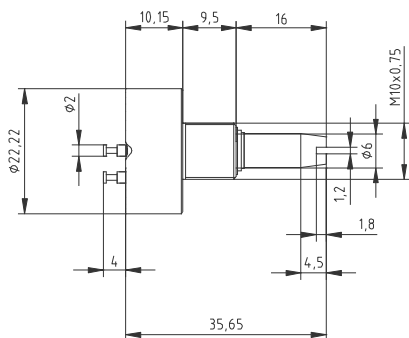
Drawing A Plain stud type Terminal



1



Drawing B I-let stud type terminal



Options:

Different Shaft lengths

Plastic Shaft

Different Angle of Rotations

Different Resistance values

Stranded Wires

Flat ribbon cable

Sample Ordering format:

Art.Nr.	Type	Design.	Resistance	Shaft	Angle
XXXXXX	POL 225	PL	5kΩ	6 mm	320°

Changes Reserved. Specifications subject to change without notice