

Hall Effect Position Sensor

Model CL 27 – CL 27E

ø 27 mm



RESENZO
SMARTER SENSING AND CONTROL

Features / Options:

- Different mountings
- Different axes
- Dual or Single output
- Single output with switch function
- 0 -5V, 0 –10V, 0,5 -4,5V, 4-20mA, SPI, CANBUS



Electrical Characteristics:

Output (Single/ Dual)	: 0 - 5 V or specific
Operating Input Voltage	: 4.5 – 5.5 Vdc / 9- 24Vdc
Overvoltage Limits	: 24Vdc
Linearity	: ± 1%
Reverse voltage protection	: -12VDC
Output short circuit current	: 15mA max.
Output Load	: 4.7 kΩ min., 10 kΩ typical.
Analog output resolution	: 0.025% of Vdd
Supply current	: 10mA max / Channel
Dielectric strength	: 750Vdc
Insulation Resistance	: 1000 MΩ
Electrostatic Discharge (ESD)	: Passes 2kV test

Mechanical Characteristics:

Mechanical Rot. Life	: > 10Mio. cycles
Mechanical angle	: Continuous or stop
Protection rating	: IP 65
Torque	: < 7 Nmm

Environmental Characteristics:

Storage temperature:	: -40°C ÷ +125°C
Operating temperature	: -40°C ÷ +125°C
Climatic rating	: 25/085/56

Material:

Housing	: Plastic
Shaft	: Stainless steel
Connections	: Gold plated terminals/wires/connector

Hall Effect Position Sensor

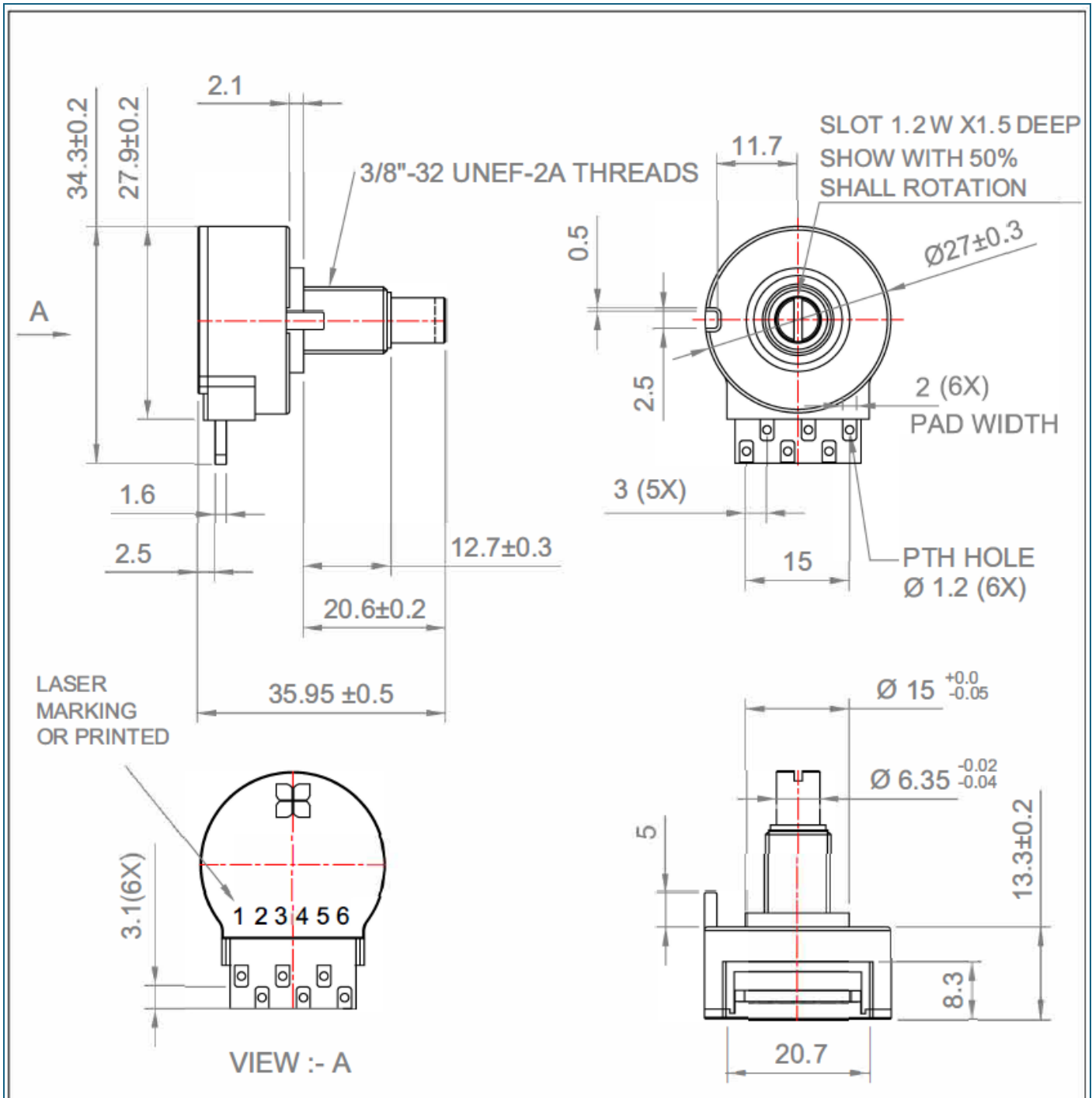
Model CL 27 – CL 27E

Ø 27 mm



RESENZO
SMARTER SENSING AND CONTROL

CL 27



Hall Effect Position Sensor

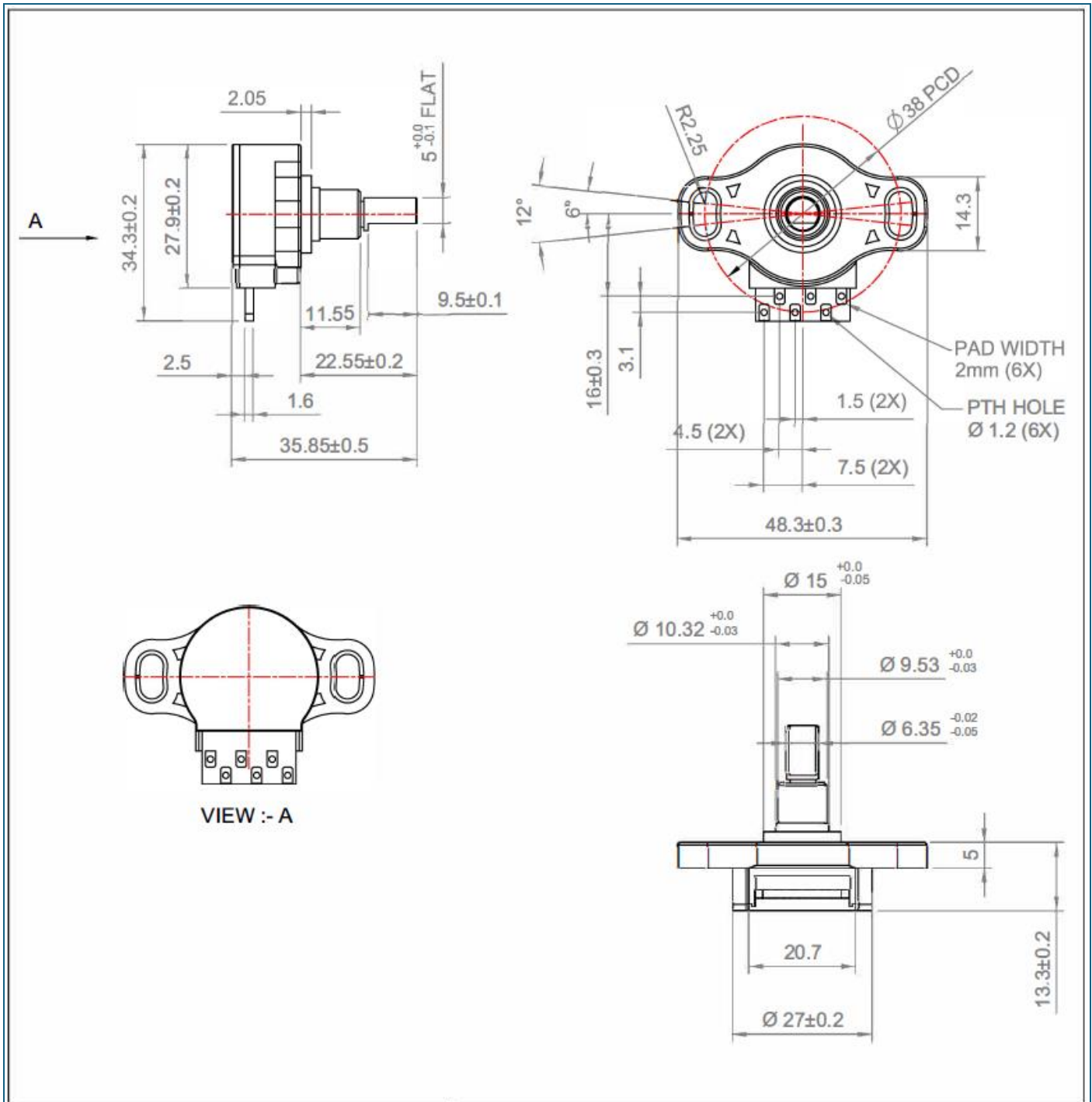
Model CL 27 – CL 27E

Ø 27 mm



RESENZO
SMARTER SENSING AND CONTROL

CL 27 E

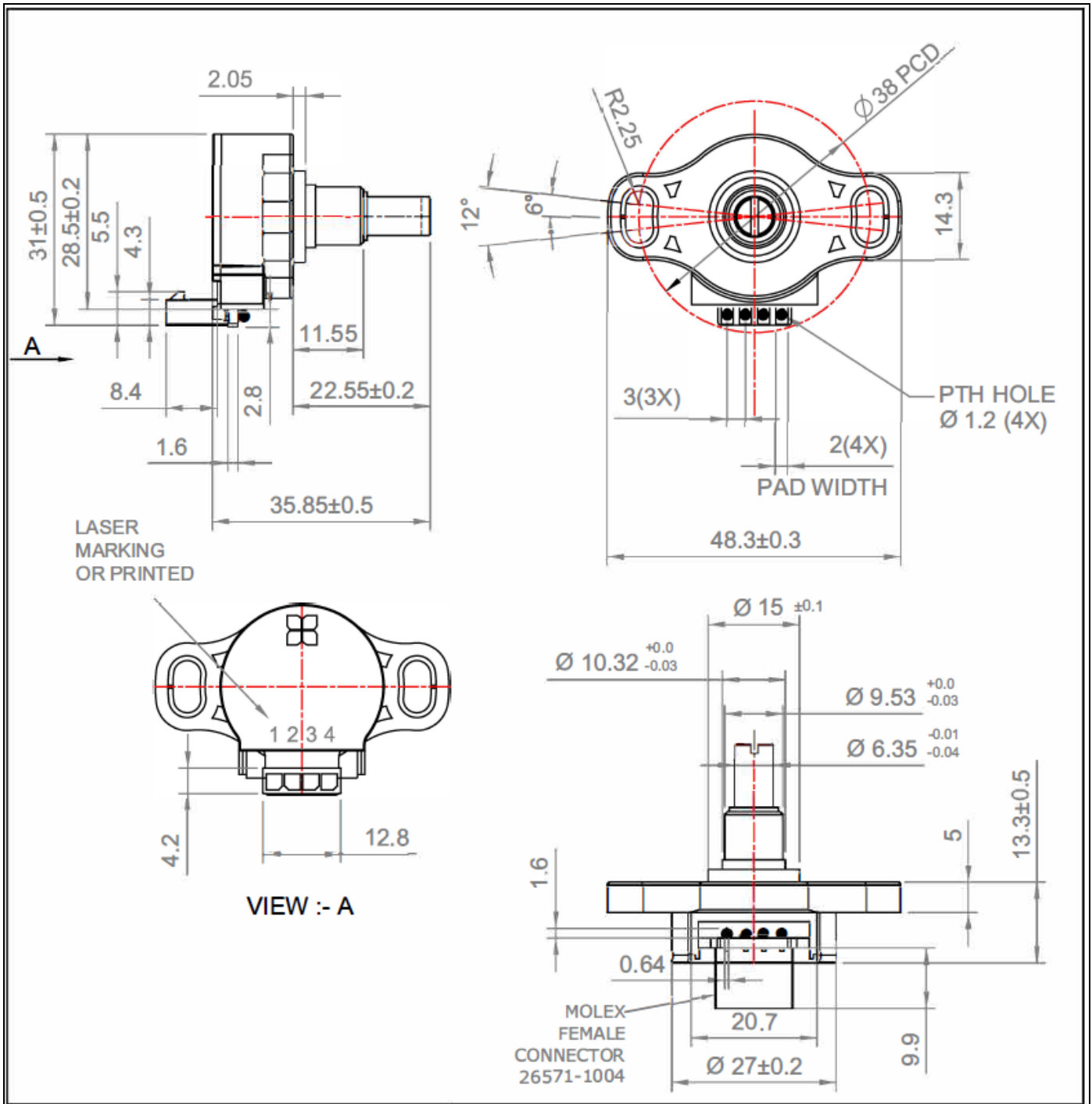


Hall Effect Position Sensor
Model CL 27 – CL 27E
 ø 27 mm



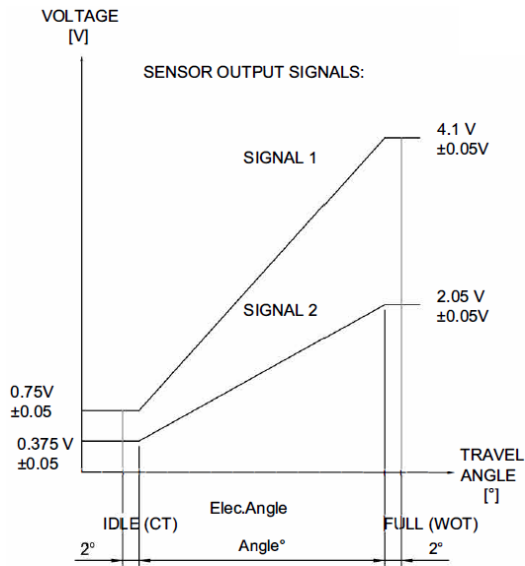
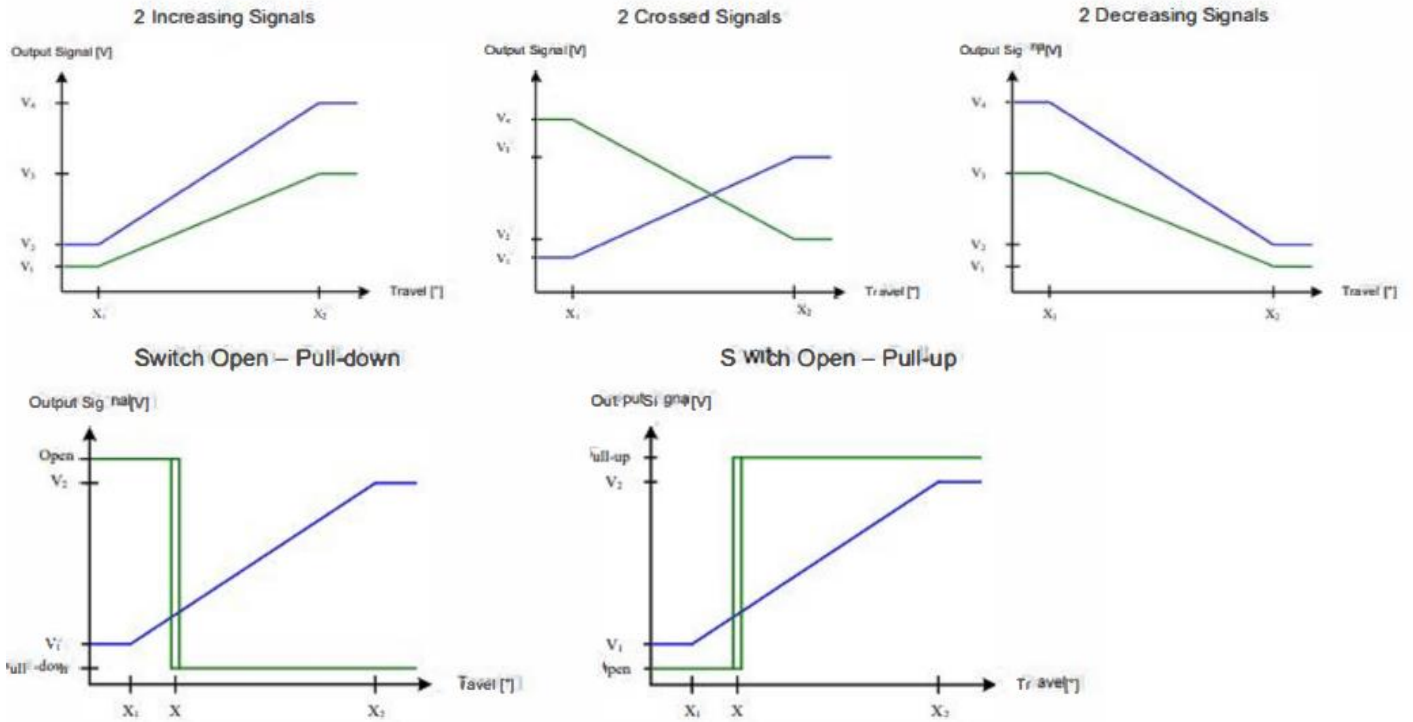
RESENZO
 SMARTER SENSING AND CONTROL

CL 27 E Connector





Examples:



	FUNCTION	PIN N°
SIGNAL 1	SUPPLY 5V	1
	GROUND 0V	2
	SIGNAL 0.75V-4.1V	4
SIGNAL 2	SUPPLY 5V	6
	GROUND 0V	5
	SIGNAL 0.375V-2.05V	3